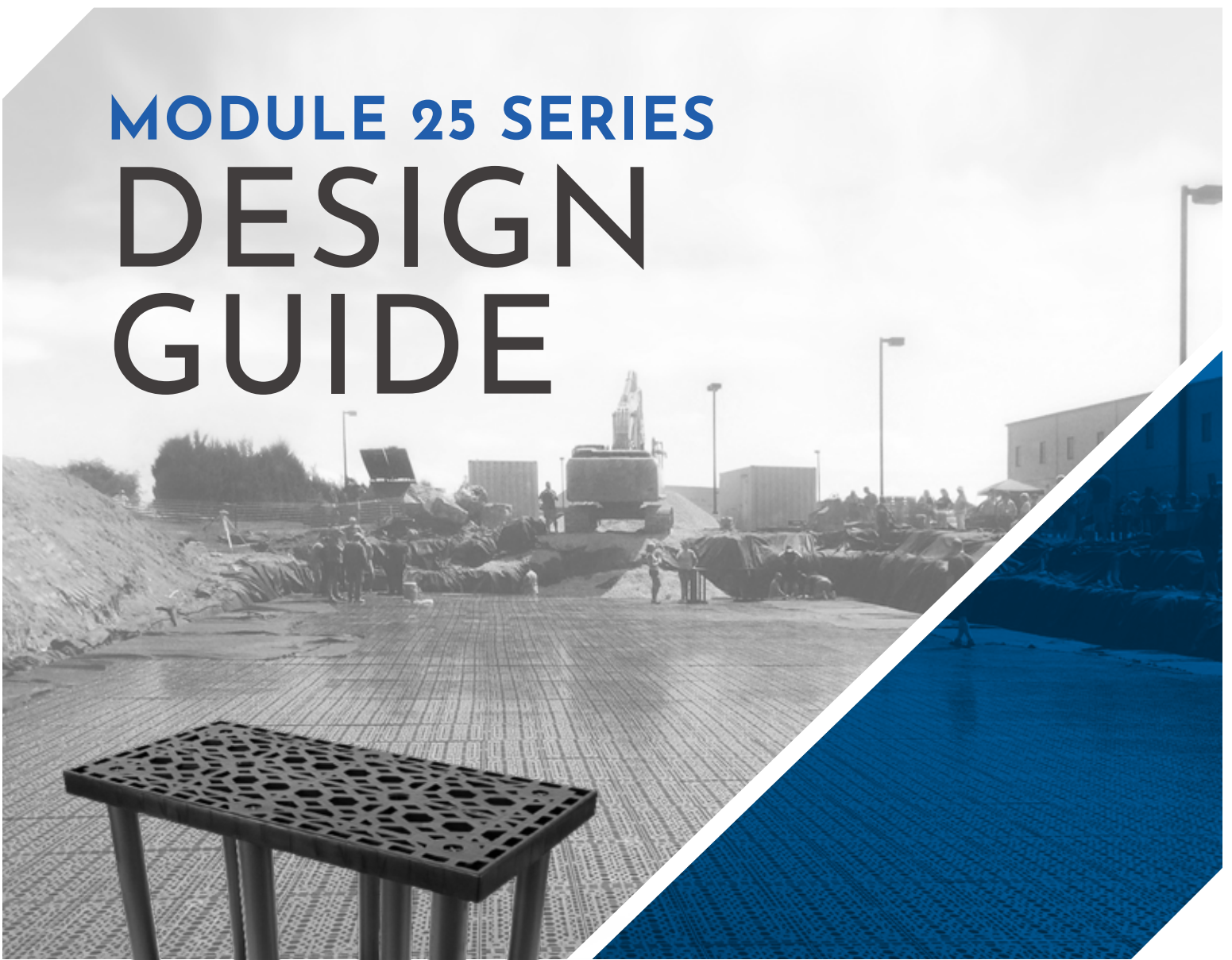


# MODULE 25 SERIES DESIGN GUIDE



A BRAND OF  BRENTWOOD

# CONTENT

<b>1.0</b>	Introduction
<b>2.0</b>	Product Information
<b>3.0</b>	Manufacturing Standards
<b>4.0</b>	Structural Response
<b>5.0</b>	Foundation
<b>6.0</b>	System Materials
<b>7.0</b>	Connections
<b>8.0</b>	Pretreatment
<b>9.0</b>	Additional Considerations
<b>10.0</b>	Inspection & Maintenance
<b>11.0</b>	System Sizing
<b>12.0</b>	Detail Drawings
<b>13.0</b>	Specifications
<b>14.0</b>	Appendix – Bearing Capacity Tables

# GENERAL NOTES

1. Brentwood recommends that the installing contractor contact either Brentwood or the local distributor prior to installation of the system to schedule a pre-construction meeting. This meeting will ensure that the installing contractor has a firm understanding of the installation instructions.
2. All systems must be designed and installed to meet or exceed Brentwood's minimum requirements. Although Brentwood offers support during the design, review, and construction phases of the Module system, it is the ultimate responsibility of the Engineer of Record to design the system in full compliance with all applicable engineering practices, laws, and regulations.
3. Brentwood requires a minimum cover of 24" (610 mm) and/or a maximum Module invert of 11' (3.35 m). Additionally, a minimum 6" (152 mm) leveling bed, 12" (305 mm) side backfill, and 12" (305 mm) top backfill are required on every system.
4. Brentwood recommends a minimum bearing capacity and subgrade compaction for all installations. If site conditions are found not to meet any design requirements during installation, the Engineer of Record must be contacted immediately.
5. All installations require a minimum two layers of geotextile fabric. One layer is to be installed around the Modules, and another layer is to be installed between the stone/soil interfaces.
6. Stone backfilling is to follow all requirements of the most current installation instructions.
7. The installing contractor must apply all protective measures to prevent sediment from entering the system during and after installation per local, state, and federal regulations.
8. The StormTank® Module carries a Limited Warranty, which can be accessed at [www.stormtank.com](http://www.stormtank.com).



## About Brentwood

Brentwood is a global manufacturer of custom and proprietary products and systems for the construction, consumer, medical, power, transportation, and water industries. A focus on plastics innovation, coupled with diverse production capabilities and engineering expertise, has allowed Brentwood to build a strong reputation for thermoplastic molding and solutions development.

Brentwood's product and service offerings continue to grow with an ever-increasing manufacturing presence. By emphasizing customer service and working closely with clients throughout the design, engineering, and manufacturing phases of each project, Brentwood develops forward-thinking strategies to create targeted, tailored solutions.

## StormTank® Module

The StormTank Module is a strong, yet lightweight, alternative to other subsurface systems and offers the largest void space (up to 97%) of any subsurface stormwater storage unit on the market. The Modules are simple to assemble on site, limiting shipping costs, installation time, and labor. Their structural PVC columns pressure fit into the polypropylene top/bottom platens, with side panels inserted around the perimeter of the system. This open design and lack of internal walls make the Module system easy to clean compared to other subsurface box structures. When properly designed, applied, installed, and maintained, the Module system has been engineered to achieve a 50-year lifespan.

## Technical Support

Brentwood's knowledgeable distributor network and in-house associates emphasize customer service and support by partnering with customers to extend the process beyond physical material supply. These trained specialists are available to assist in the review of proposed systems, conversions of alternatively designed systems, or to resolve any potential concerns before, during, and after the design process. To provide the best assistance, it is recommended that associates be provided with a site plan and cross-sections that include grading, drainage structures, dimensions, etc.

## 2.0 PRODUCT INFORMATION

### Applications

The Module system can be utilized for detention, infiltration, capture and reuse, and specialty applications across a wide range of industries, including the commercial, residential, and recreational segments. The product's modular design allows the system to be configured in almost any shape (even around utilities) and to be located under almost any pervious or impervious surface.

### Module Selection

Brentwood manufactures the Module in six different heights (Table 1) that can be stacked uniformly up to two Modules high. This allows for numerous height configurations up to 6' (1.83 m) tall. The Modules can be buried up to a maximum invert of 11' (3.35 m) and require a minimum cover of 24" (610 mm) for load rating. When selecting the proper Module, it is important to consider the minimum required cover, any groundwater or limiting zone restrictions, footprint requirements, and all local, state, and federal regulations.

Table 1: Nominal StormTank® Module Specifications



MODEL SPEC	ST-12	ST-18	ST-24	ST-30	ST-33	ST-36
Height	12" (305 mm)	18" (457 mm)	24" (610 mm)	30" (762 mm)	33" (838 mm)	36" (914 mm)
Void Space	93.70%	95.5%	96.0%	96.5%	96.9%	97.0%
Storage Capacity	4.21 ft <sup>3</sup> (0.12 m <sup>3</sup> )	6.54 ft <sup>3</sup> (0.18 m <sup>3</sup> )	8.64 ft <sup>3</sup> (0.24 m <sup>3</sup> )	10.86 ft <sup>3</sup> (0.31 m <sup>3</sup> )	11.99 ft <sup>3</sup> (0.34 m <sup>3</sup> )	13.10 ft <sup>3</sup> (0.37 m <sup>3</sup> )
Min. Installed Capacity*	6.91 ft <sup>3</sup> (0.20 m <sup>3</sup> )	9.15 ft <sup>3</sup> (0.26 m <sup>3</sup> )	11.34 ft <sup>3</sup> (0.32 m <sup>3</sup> )	13.56 ft <sup>3</sup> (0.38 m <sup>3</sup> )	14.69 ft <sup>3</sup> (0.42 m <sup>3</sup> )	15.80 ft <sup>3</sup> (0.45 m <sup>3</sup> )
Weight	17.56 lb (7.97 kg)	22.70 lb (10.30 kg)	26.30 lb (11.93 kg)	29.50 lb (13.38 kg)	31.30 lb (14.20 kg)	33.10 lb (15.01 kg)

(\* Minimum Installed Capacity includes the leveling bed, Module, and top backfill storage capacity for one Module. Stone storage capacity is based on 40% void space. Side backfill storage is not included.

## 3.0 MANUFACTURING STANDARDS

Brentwood selects material based on long-term performance needs. To ensure long-term performance and limit component deflection over time (creep), Brentwood selected polyvinyl chloride (PVC) for the Module's structural columns and a virgin polypropylene (PP) blend for the top/bottom and side panels. PVC provides the largest creep resistance of commonly available plastics, and therefore, provides the best performance under loading conditions. Materials like polyethylene (HDPE) and recycled PP have lower creep resistance and are not recommended for load-bearing products and applications.

### Materials:

Brentwood's proprietary PVC and PP copolymer resins have been chosen specifically for utilization in the StormTank® Module. The PVC is blended in house by experts and is a 100% blend of post-manufacturing/pre-consumer recycled material. Both materials exhibit structural resilience and naturally resist the chemicals typically found in stormwater runoff.

### Methods:

#### Injection Molding

The Module's top/bottom platens and side panels are injection molded, using proprietary molds and materials. This allows Brentwood to manufacture a product that meets structural requirements while maintaining dimensional control, molded-in traceability, and quality control.

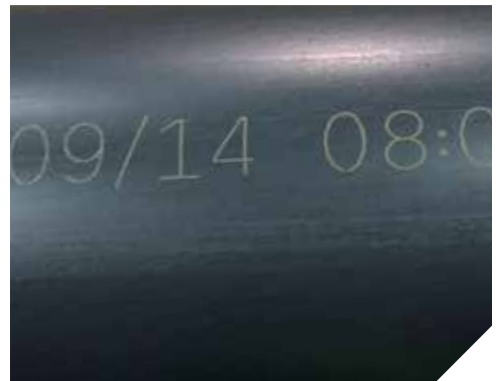
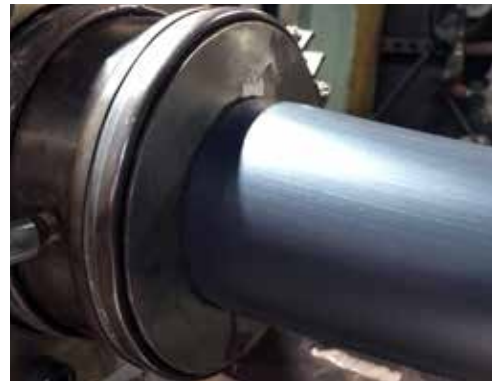
#### Extrusion

Brentwood's expertise in PVC extrusion allows the structural columns to be manufactured in house. The column extrusion includes the internal structural ribs required for lateral support.

### Quality Control

Brentwood maintains strict quality control in order to ensure that materials and the final product meet design requirements. This quality assurance program includes full material property testing in accordance with American Society for Testing and Materials (ASTM) standards, full-part testing, and process testing in order to quantify product performance during manufacturing. Additionally, Brentwood conducts secondary finished-part testing to verify that design requirements continue to be met post-manufacturing.

All Module parts are marked with traceability information that allows for tracking of manufacturing. Brentwood maintains equipment at all manufacturing locations, as well as at its corporate testing lab, to ensure all materials and products meet all requirements.



## 4.0 STRUCTURAL RESPONSE

### Structural Design

The Module has been designed to resist loads calculated in accordance with the American Association of State Highway and Transportation Officials' (AASHTO) Load and Resistance Factor Design (LRFD) Bridge Design manual. This fully factored load includes a multiple presence factor, dynamic load allowance, and live load factor to account for real-world situations. This loading was considered when Brentwood developed both the product and installation requirements. The developed minimum cover ensures the system maintains an adequate resistance factor for the design truck (HS-20) and HS-25 loads.

### Full-Scale Product Testing

Engineers at Brentwood's in-house testing facility have completed full-scale vertical and lateral tests on the Module to evaluate product response. To date, Brentwood continues in-house testing in order to evaluate long-term creep effects.

### Fully Installed System Testing

Brentwood's dedication to providing a premier product extends to fully installed testing. Through a partnership with Queen's University's GeoEngineering Centre in Kingston, Ontario, Brentwood has conducted full-scale installation tests of single- and double-stacked Module systems to analyze short- and long-term performance. Testing includes short-term ultimate limit state testing under fully factored AASHTO loads and minimum installation cover, lateral load testing, long-term performance and lifecycle testing utilizing time-temperature superposition, and load resistance development. Side backfill material tests were also performed to compare the usage of sand, compacted stone, and uncompacted stone.



## 5.0 FOUNDATION

The foundation (subgrade) of the subsurface storage structure may be the most important part of the Module system installation as this is the location where the system applies the load generated at the surface. If the subgrade lacks adequate support or encounters potential settlement, the entire system could be adversely affected. Therefore, when implementing an underground storage solution, it is imperative that a geotechnical investigation be performed to ensure a strong foundation.

### Considerations & Requirements:

#### Bearing Capacity

The bearing capacity is the ability of the soil to resist settlement. In other words, it is the amount of weight the soil can support. This is important versus the native condition because the system is replacing earth, and even though the system weighs less than the earth, the additional load displacement of the earth is not offset by the difference in weight.

Using the Loading and Resistance Factor Design (LRFD) calculation for bearing capacity, Brentwood has developed a conservative minimum bearing capacity table (see Appendix). The Engineer of Record shall reference this table to assess actual cover versus the soil bearing required for each unit system.

#### Limiting Zones

Limiting zones are conditions in the underlying soils that can affect the maximum available depth for installation and can reduce the strength and stability of the underlying subgrade. The three main forms of limiting zones are water tables, bedrock, and karst topography. It is recommended that a system be offset a minimum of 12" (305 mm) from any limiting zones.

#### Compaction

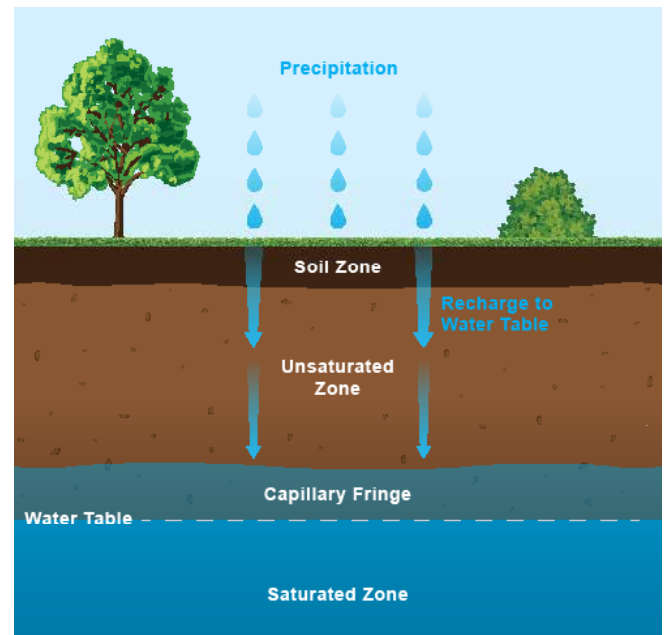
Soil compaction occurs as the soil particles are pressed together and pore space is eliminated. By compacting the soils to 95% (as recommended by Brentwood), the subgrade strength will increase, in turn limiting both the potential for the soil to move once installed and for differential settlement to occur throughout the system. If designing the specific compaction requirement, settlement should be limited to less than 1" (25 mm) through the entire subgrade and should not exceed a 1/2" (13 mm) of differential settlement between any two adjacent units within the system over time.

#### Mitigation

If a minimum subgrade bearing capacity cannot be achieved because of weak soil, a suitable design will need to be completed by a Geotechnical Engineer. This design may include the over-excavation of the subgrade and an engineered fill or slurry being placed. Additional material such as geogrid or other products may also be required. Please contact a Geotechnical Engineer prior to selecting products or designing the subgrade.



*Soil Profile*



*Water Table Zones*

## 6.0 SYSTEM MATERIALS

### Geotextile Fabric

The 6-ounce geotextile fabric is recommended to be installed between the soil and stone interfaces around the Modules to prevent soil migration.

### Leveling Bed

The leveling bed is constructed of 6"-thick (152 mm) angular stone (Table 2). The bed has not been designed as a structural element but is utilized to provide a level surface for the installation of the system and provide an even distribution of load to the subgrade.

### Stone Backfill

The stone backfill is designed to limit the strain on the product through displacement of load and ensure the product's longevity. Therefore, a minimum of 12"-wide (305 mm) angular stone must be placed around all sides of the system. In addition, a minimum layer of 12" (305 mm) angular stone is required on top of the system. All material is to be placed evenly in 12" (305 mm) lifts around and on top of the system and aligned with a vibratory plate compactor.

Table 2: Approved Backfill Material

Material Location	Description	AASHTO M43 Designation	ASTM D2321 Class	Compaction/Density
<b>Finished Surface</b>	Topsoil, hardscape, stone, concrete, or asphalt per Engineer of Record	N/A	N/A	Prepare per engineered plans
<b>Suitable Compactable Fill</b>	Well-graded granular soil/aggregate, typically road base or earthen fill (maximum 4" particle size)	56, 57, 6, 67, 68	I & II III (Earth Only)	Place in maximum 12" lifts to a minimum 90% standard proctor density
<b>Top Backfill</b>	Crushed angular stone placed between Modules and road base or earthen fill	56, 57, 6, 67, 68	I & II	Plate vibrate to provide evenly distributed layers
<b>Side Backfill</b>	Crushed angular stone placed between earthen wall and Modules	56, 57, 6, 67, 68	I & II	Place and plate vibrate in uniform 12" lifts around the system
<b>Leveling Bed</b>	Crushed angular stone placed to provide level surface for installation of Modules	56, 57, 6, 67, 68	I & II	Plate vibrate to achieve level surface

### Impermeable Liner

In designs that prevent runoff from infiltrating into the surrounding soil (detention or reuse applications) or groundwater from entering the system, an impermeable liner is required. When incorporating a liner as part of the system, Brentwood recommends using a manufactured product such as a PVC liner. This can be installed around the Modules themselves or installed around the excavation (to gain the benefit of the void space in the stone) and should include an underdrain system to ensure the basin fully drains. This liner is installed with a layer of geotextile fabric on both sides to prevent puncture, in accordance with manufacturer recommendations.



## 7.0 CONNECTIONS

Stormwater runoff must be able to move readily in and out of the StormTank® Module system. Brentwood has developed numerous means of connecting to the system, including inlet/outlet ports and direct abutment to a catch basin or endwall. All methods of connection should be evaluated as each one may offer a different solution. Brentwood has developed drawings to assist with specific installation methods, and these are available at [www.stormtank.com](http://www.stormtank.com).

### Inlet/Outlet and Pipe Connections

To facilitate easy connection to the system, Brentwood manufactures two inlet/outlet ports. They are 12" (305 mm) and 14" (356 mm), respectfully, and utilize a flexible coupling connection to the adjoining pipe.

Another common installation method is to directly connect the pipe to the system. In order to do this, an opening is cut into the side panels, the pipe is inserted, and then the system is wrapped in geotextile fabric. When utilizing this connection method, the pipe must be located a minimum of 3" (76 mm) from the bottom of the system. This provides adequate clearance for the bottom platen and the required strength in the remaining side panel. To maintain the required clearances or reduce pipe size, it may be necessary to connect utilizing a manifold system.

### Direct Abutment

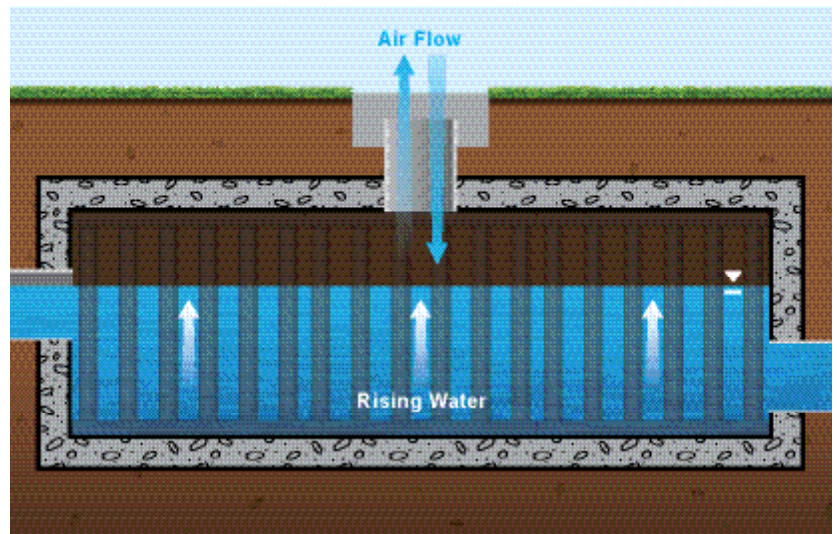
The system can also be connected by directly abutting Modules to a concrete catch basin or endwall. This allows for a seamless connection of structures in close proximity to the system and eliminates the need for numerous pipe connections. When directly abutting one of these structures, remove any side panels that fully abut the structure, and make sure it is flush with the system to prevent material migration into the structure.

### Underdrain

Underdrains are typically utilized in detention applications to ensure the system fully drains since infiltration is limited or prohibited. The incorporation of an underdrain in a detention application will require an impermeable liner between the stone-soil interface.

### **Cleanout Ports**

Brentwood understands the necessity to inspect and clean a subsurface system and has designed the Module without any walls to allow full access. Brentwood offers three different cleanout/observation ports for utilization with the system. The ports are made from PVC, provide an easy means of connection, and are available in 6" (152 mm), 8" (203 mm) and 10" (254 mm) diameters. The 10" (254 mm) port is sized to allow access to the system by a vacuum truck suction hose for easy debris removal. It is recommended that ports be located a maximum of 30' (9.14 m) on center to provide adequate access, ensure proper airflow, and allow the system to completely fill.



*Ventilation and Air Flow*

## 8.0 PRETREATMENT

Removing pollutants from stormwater runoff is an important component of any stormwater management plan. Pretreatment works to prevent water quality deterioration and also plays an integral part in allowing the system to maintain performance over time and increase longevity. Treatment products vary in complexity, design, and effectiveness, and therefore, should be selected based on specific project requirements.

### Typical Stormwater System



### StormTank® Shield

Brentwood's StormTank Shield provides a low-cost solution for stormwater pretreatment. Designed to improve sumped inlet treatment, the Shield reduces pollutant discharge through gross sediment removal and oil/water separation. For more information, please visit [www.stormtank.com](http://www.stormtank.com).

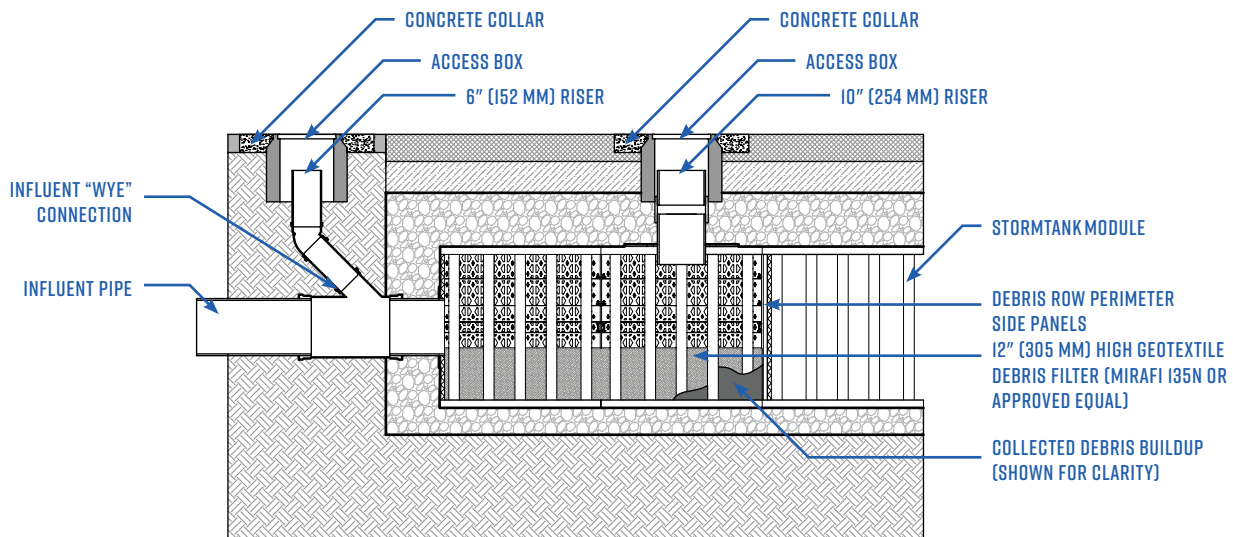
### Debris Row (Easy Cleanout)

An essential step of designing, installing, and maintaining a subsurface system is preventing debris from entering the storage. This can be done by incorporating debris rows (or bays) at the inlets of the system to prevent debris from entering the rest of the system.

The debris row is built into the system utilizing side panels with a 12" (305 mm) segment of geotextile fabric. This allows for the full basin capacity to be utilized while storing any debris in an easy-to-remove location. To calculate the number of side panels required to prevent backing up, the opening area of the side panels on the area above the geotextile fabric has been calculated and compared to the inflow pipe diameter.

Debris row cleanout is made easy by including 10" (254 mm) suction ports, based on the length of the row, and a 6" (152 mm) saddle connection to the inflow pipe. If the system is directly abutting a catch basin, the saddle connection is not required, and the flush hose can be inserted through the catch basin. Debris is then flushed from the inlet toward the suction ports and removed.

Brentwood has developed drawings and specifications that are available at [www.stormtank.com](http://www.stormtank.com) to illustrate the debris row configuration and layouts.



Debris Row Section Detail

## 9.0 ADDITIONAL CONSIDERATIONS

Many variable factors, such as the examples below, must be taken into consideration when designing a StormTank® Module system. As these considerations require complex calculations and proper planning, please contact Brentwood or your local distributor to discuss project-specific requirements.

### Adaptability

The Modules can be arranged in custom configurations to meet tight site constraints and to provide different horizontal and edge configurations. Modules can also be stacked, to a maximum 2 units tall, to meet capacity needs and can be buried to a maximum invert of 11' (3.35 m) to allow for a stacked system or deeper burial.

### Adjacent Structures

The location of adjacent structures, especially the location of footings and foundations, must be taken into consideration as part of system design. The foundation of a building or retaining wall produces a load that is transmitted to a footing and then applied to the surface below. The footing is intended to distribute the line load of the wall over a larger area without increasing the larger wall's thickness. The reason this is important is because the load the footing is applying to the earth is distributed through the earth and could potentially affect a subsurface system as either a vertical load to the top of the Module or a lateral load to the side of the Module.

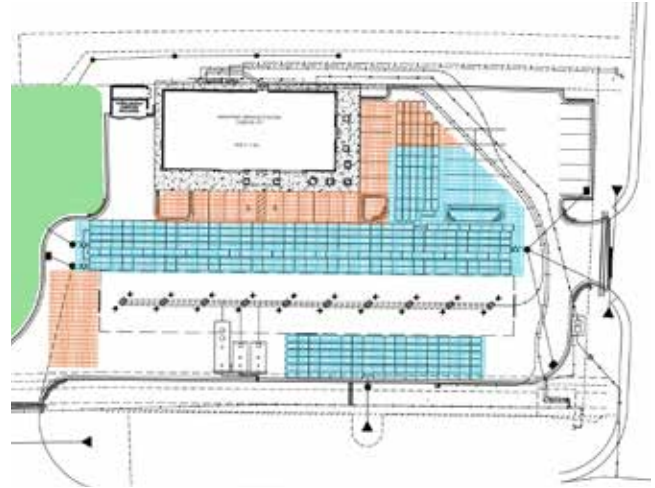
Based on this increased loading, it is recommended that the subsurface system either maintain a distance away from the foundation, footing equal to the height between the Module invert and structure invert of the system, or the foundation or footing extend at a minimum to the invert of the subsurface system. By locating the foundation away from the system or equal to the invert, the loading generated by the structure does not get transferred onto the system. It is recommended that all adjacent structures be completed prior to the installation of the Modules to prevent construction loads from being imparted on the system.

### Adjacent Excavation

The subsurface system must be protected before, during, and after the installation. Once a system is installed, it is important to remember that excavation adjacent to the system could potentially cause the system to become unstable. The uniform backfilling will evenly distribute the lateral loads to the system and prohibit the system from becoming unstable and racking from unequal loads. However, it is recommended that any excavation adjacent to a system remain a minimum distance away from the system equal to the invert. This will provide a soil load that is equal to the load applied by the opposite side of the installation. If the excavation is to exceed the invert of the system, additional analysis may be necessary.

### Sloped Finished Grade

Much like adjacent excavation, a finished grade with a differential cover could potentially cause a subsurface system to become disproportionately loaded. For example, if one side of the system has 10' (3.05 m) of cover and the adjacent side has 24" (610 mm) of cover, the taller side will generate a higher lateral load, and the opposite side may not have an equal amount of resistance to prevent a racking of the system. Additional evaluation may be required when working on sites where the final grade around a system exceeds 5%.



*Site Plan Module Layout Adaptability  
(StormTank Modules shown in blue)*

## 10.0 INSPECTION & MAINTENANCE

### Description

Proper inspection and maintenance of a subsurface stormwater storage system are vital to ensuring proper product functioning and system longevity. It is recommended that during construction the contractor takes the necessary steps to prevent sediment from entering the subsurface system. This may include the installation of a bypass pipe around the system until the site is stabilized. The contractor should install and maintain all site erosion and sediment per Best Management Practices (BMP) and local, state, and federal regulations.

Once the site is stabilized, the contractor should remove and properly dispose of erosion and sediment per BMP and all local, state, and federal regulations. Care should be taken during removal to prevent collected sediment or debris from entering the stormwater system. Once the controls are removed, the system should be flushed to remove any sediment or construction debris by following the maintenance procedure outlined below.

During the first service year, a visual inspection should be completed during and after each major rainfall event, in addition to semi-annual inspections, to establish a pattern of sediment and debris buildup. Each stormwater system is unique, and multiple criteria can affect maintenance frequency. For example, whether or not a system design includes inlet protection or a pretreatment device has a substantial effect on the system's need for maintenance. Other factors include where the runoff is coming from (hardscape, gravel, soil, etc.) and seasonal changes like autumn leaves and winter salt.

During and after the second year of service, an established annual inspection frequency, based on the information collected during the first year, should be followed. At a minimum, an inspection should be performed semi-annually. Additional inspections may be required at the change of seasons for regions that experience adverse conditions (leaves, cinders, salt, sand, etc).

### Maintenance Procedures

Inspection:

1. Inspect all observation ports, inflow and outflow connections, and the discharge area.
2. Identify and log any sediment and debris accumulation, system backup, or discharge rate changes.
3. If there is a sufficient need for cleanout, contact a local cleaning company for assistance.

Cleaning:

1. If a pretreatment device is installed, follow manufacturer recommendations.
2. Using a vacuum pump truck, evacuate debris from the inflow and outflow points.
3. Flush the system with clean water, forcing debris from the system.
4. Repeat steps 2 and 3 until no debris is evident.

## 11.0 SYSTEM SIZING

### System Sizing Calculation

This section provides a brief description of the process required to size the StormTank® Module system. If you need additional assistance in determining the required number of Modules or assistance with the proposed configuration, it is recommended that you contact Brentwood or your local distributor. Additionally, Brentwood's volume calculator can help you to estimate the available storage volumes with and without stone storage. This tool is available at [www.stormtank.com](http://www.stormtank.com).

#### 1. Determine the required storage volume (Vs):

It is the sole responsibility of the Engineer of Record to calculate the storage volume in accordance with all local, state, and federal regulations.

#### 2. Determine the required number of Modules (N):

If the storage volume does not include stone storage, take the total volume divided by the selected Module storage volume. If the stone storage is to be included, additional calculations will be required to determine the available stone storage for each configuration.

#### 3. Determine the required volume of stone (Vstone):

The system requires a minimum 6" (152 mm) leveling bed, 12" (305 mm) backfill around the system, and 12" (305 mm) top backfill utilizing 3/4" (19 mm) angular clean stone. Therefore, take the area of the system times the leveling bed and the top backfill. Once that value is determined, add the volume based on the side backfill width times the height from the invert of the Modules to the top of the Modules.

#### 4. Determine the required excavation volume (Vexcv):

Utilizing the area of the system, including the side backfill, multiply by the depth of the system including the leveling bed. It is noted that this calculation should also include any necessary side pitch or benching that is required for local, state, or federal safety standards.

#### 5. Determine the required amount of geotextile (G):

The system utilizes a multiple layer system of geotextile fabric. Therefore, two calculations are required to determine the necessary amount of geotextile. The first layer surrounds the entire system (including all backfill), and the second layer surrounds the Module system only. It is recommended that an additional 20% be included for waste and overlap.



## 11.2 MATERIAL QUANTITY WORKSHEET

Project Name:

By:

Location:

Date:

### System Requirements

Required Storage	ft <sup>3</sup> (m <sup>3</sup> )
Number of Modules	Each
Module Storage	ft <sup>3</sup> (m <sup>3</sup> )
Stone Storage	ft <sup>3</sup> (m <sup>3</sup> )
Module Footprint	ft <sup>2</sup> (m <sup>2</sup> ) Number of Modules x 4.5 ft <sup>2</sup> (0.42 m <sup>2</sup> )
System Footprint w/ Stone	ft <sup>2</sup> (m <sup>2</sup> ) Module Footprint + 1 ft (0.3048 m) to each edge
Stone	Tons (kg) Leveling Bed + Side Backfill + Top Backfill
Volume of Excavation	yd <sup>3</sup> (m <sup>3</sup> ) System Footprint w/ Stone x Total Height
Area of Geotextile	yd <sup>2</sup> (m <sup>2</sup> ) Wrap around Modules + Wrap around Stone/Soil Interface

### System Cost

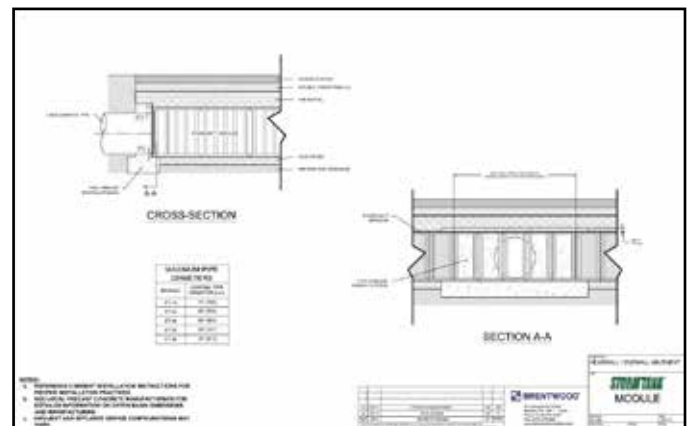
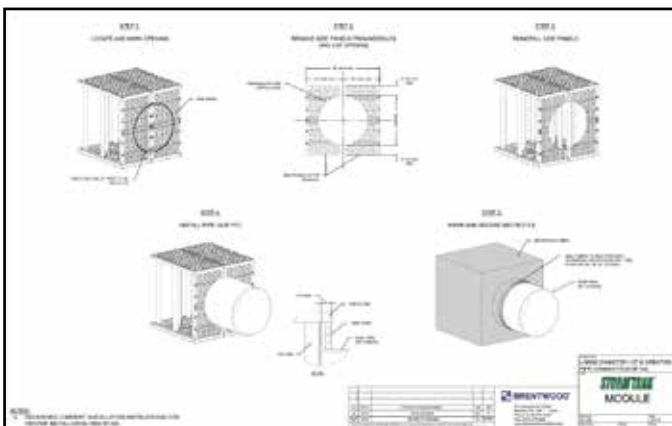
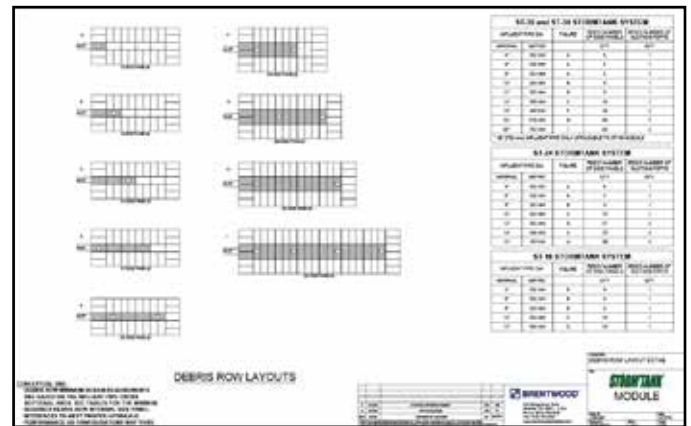
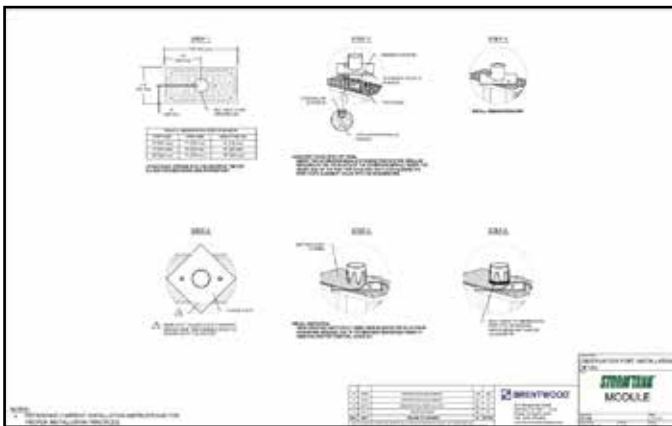
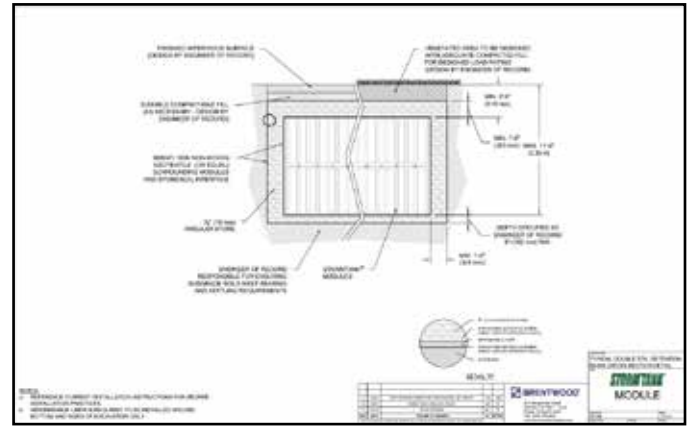
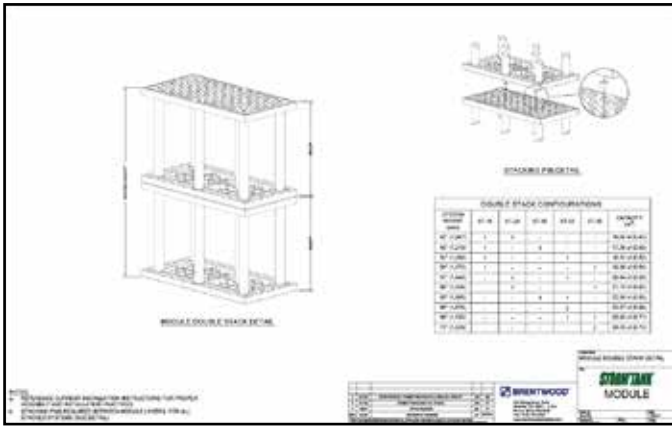
	Quantity		Unit Price		Total
Modules	ft <sup>3</sup> (m <sup>3</sup> )	<b>X</b>	\$	ft <sup>3</sup> (m <sup>3</sup> )	= \$
Stone	Tons (kg)	<b>X</b>	\$	Tons (kg)	= \$
Excavation	yd <sup>3</sup> (m <sup>3</sup> )	<b>X</b>	\$	yd <sup>3</sup> (m <sup>3</sup> )	= \$
Geotextile	yd <sup>2</sup> (m <sup>2</sup> )	<b>X</b>	\$	yd <sup>2</sup> (m <sup>2</sup> )	= \$
<b>Subtotal =</b>					\$
<b>Tons =</b>					\$

Material costs may not include freight.

Please contact Brentwood or your local distributor for this information.

# 12.0 DETAIL DRAWINGS

Brentwood has developed numerous drawings for utilization when specifying a StormTank® Module system. Below are some examples of drawings available at [www.stormtank.com](http://www.stormtank.com).





## 13.0 SPECIFICATIONS

### 1) General

- a) This specification shall govern the implementation, performance, material, and fabrication pertaining to the subsurface stormwater storage system. The subsurface stormwater storage system shall be manufactured by Brentwood Industries, Inc., 500 Spring Ridge Drive, Reading, PA 19610 (610.374.5109), and shall adhere to the following specification at the required storage capacities.
- b) All work is to be completed per the design requirements of the Engineer of Record and to meet or exceed the manufacturer's design and installation requirements.

### 2) Subsurface Stormwater Storage System Modules

- a) The subsurface stormwater storage system shall be constructed from virgin polypropylene and 100% recycled PVC to meet the following requirements:
  - i) High-Impact Polypropylene Copolymer Material
    - (1) Injection molded, polypropylene, top/bottom platens and side panels formed to a dimension of 36" (914 mm) long by 18" (457 mm) wide [nominal].
  - ii) 100% Recycled PVC Material
    - (1) PVC conforming to ASTM D-1784 Cell Classification 12344 b-12454 B.
    - (2) Extruded, rigid, and 100% recycled PVC columns sized for applicable loads as defined by Section 3 of the AASHTO LRFD Bridge Design Specifications and manufactured to the required length per engineer-approved drawings.
  - iii) Platens and columns are assembled on site to create Modules, which can be uniformly stacked up to two Modules high, in vertical structures of variable height (custom for each project).
  - iv) Modular stormwater storage units must have a minimum 95% void space and be continuously open in both length and width, with no internal walls or partitions.

### 3) Submittals

- a) Only systems that are approved by the engineer will be allowed.
- b) At least 10 days prior to bid, submit the following to the engineer to be considered for pre-qualification to bid:
  - i) A list of materials to be provided for work under this article, including the name and address of the materials producer and the location from which the materials are to be obtained.
  - ii) Three hard copies of the following:
    - (1) Shop drawings.
    - (2) Specification sheets.
    - (3) Installation instructions.
    - (4) Maintenance guidelines.
- c) Subsurface Stormwater Storage System Component Samples for review:
  - i) Subsurface stormwater storage system Modules provide a single 36" (914 mm) long by 18" (457 mm) wide, height as specified, unit of the product for review.
  - ii) Sample to be retained by owner.
- d) Manufacturers named as acceptable herein are not required to submit samples.

### 4) Structural Design

- a) The structural design, backfill, and installation requirements shall ensure the loads and load factors specified in the AASHTO LRFD Bridge Design Specifications, Section 3 are met.
- b) Product shall be tested under minimum installation criteria for short-duration live loads that are calculated to include a 20% increase over the AASHTO Design Truck standard with consideration for impact, multiple vehicle presences, and live load factor.
- c) Product shall be tested under maximum burial criteria for long-term dead loads.
- d) The engineer may require submission of third-party test data and results in accordance with items 4b and 4c to ensure adequate structural design and performance.

# 14.0 APPENDIX - BEARING CAPACITY TABLES

Cover		HS-25 (Unfactored)		HS-25 (Factored)	
English (in)	Metric (mm)	English (ksf)	Metric (kPa)	English (ksf)	Metric (kPa)
24	610	1.89	90.45	4.75	227.43
25	635	1.82	86.96	4.53	216.90
26	660	1.75	83.78	4.34	207.80
27	686	1.69	80.88	4.16	199.18
28	711	1.63	78.24	3.99	191.04
29	737	1.58	75.82	3.84	183.86
30	762	1.54	73.62	3.70	177.16
31	787	1.50	71.60	3.57	170.93
32	813	1.46	69.75	3.45	165.19
33	838	1.42	68.06	3.34	159.92
34	864	1.39	66.51	3.24	155.13
35	889	1.36	65.10	3.14	150.34
36	914	1.33	63.80	3.05	146.03
37	940	1.31	62.62	2.97	142.20
38	965	1.29	61.54	2.90	138.85
39	991	1.26	60.55	2.83	135.50
40	1,016	1.25	59.65	2.76	132.15
41	1,041	1.23	58.54	2.70	129.28
42	1,067	1.21	58.09	2.67	127.84
43	1,092	1.20	57.42	2.60	124.49
44	1,118	1.19	56.81	2.55	122.09
45	1,143	1.18	56.26	2.50	119.70
46	1,168	1.16	55.77	2.46	117.79
47	1,194	1.16	55.33	2.42	115.87
48	1,219	1.15	54.94	2.39	114.43
49	1,245	1.14	54.59	2.36	113.00
50	1,270	1.13	54.29	2.33	111.56
51	1,295	1.13	54.03	2.30	110.12
52	1,321	1.12	53.80	2.27	108.69
53	1,346	1.12	53.62	2.25	107.73
54	1,372	1.12	53.46	2.23	106.77
55	1,397	1.11	53.34	2.21	105.82
56	1,422	1.11	53.24	2.19	104.86
57	1,448	1.11	53.18	2.17	103.90
58	1,473	1.11	53.14	2.16	103.42
59	1,499	1.11	53.12	2.14	102.46
60	1,524	1.11	53.13	2.13	101.98
61	1,549	1.11	53.16	2.12	101.51
62	1,575	1.11	53.21	2.11	101.03
63	1,600	1.11	53.28	2.10	100.55
64	1,626	1.11	53.37	2.09	100.07
65	1,651	1.12	53.48	2.08	99.59
66	1,676	1.12	53.61	2.08	99.59
67	1,702	1.12	53.75	2.07	99.11
68	1,727	1.13	53.91	2.07	99.11
69	1,753	1.13	54.08	2.06	98.63

Cover		HS-25 (Unfactored)		HS-25 (Factored)	
English (in)	Metric (mm)	English (ksf)	Metric (kPa)	English (ksf)	Metric (kPa)
70	1,778	1.13	54.26	2.06	98.63
71	1,803	1.14	54.46	2.06	98.63
72	1,829	1.14	54.67	2.06	98.63
73	1,854	1.15	54.90	2.06	98.63
74	1,880	1.15	55.13	2.06	98.63
75	1,905	1.16	55.38	2.06	98.63
76	1,930	1.16	55.64	2.06	98.63
77	1,956	1.17	55.90	2.06	98.63
78	1,981	1.17	56.18	2.06	98.63
79	2,007	1.18	56.46	2.07	99.11
80	2,032	1.19	56.76	2.07	99.11
81	2,057	1.19	57.06	2.07	99.11
82	2,083	1.20	57.37	2.08	99.59
83	2,108	1.20	57.69	2.08	99.59
84	2,134	1.21	58.02	2.09	100.07
85	2,159	1.22	58.35	2.09	100.07
86	2,184	1.23	58.69	2.10	100.55
87	2,210	1.23	59.04	2.11	101.03
88	2,235	1.24	59.39	2.11	101.03
89	2,261	1.25	59.75	2.12	101.51
90	2,286	1.26	60.11	2.13	101.98
91	2,311	1.26	60.48	2.13	101.98
92	2,337	1.27	60.86	2.14	102.46
93	2,362	1.28	61.24	2.15	102.94
94	2,388	1.29	61.62	2.16	103.42
95	2,413	1.30	62.01	2.17	103.90
96	2,438	1.30	62.41	2.18	104.38
97	2,464	1.31	62.81	2.19	104.86
98	2,489	1.32	63.21	2.20	105.34
99	2,515	1.33	63.62	2.21	105.82
100	2,540	1.34	64.03	2.22	106.29
101	2,565	1.35	64.45	2.23	106.77
102	2,591	1.35	64.87	2.24	107.25
103	2,616	1.36	65.29	2.25	107.73
104	2,642	1.37	65.72	2.27	108.69
105	2,667	1.38	66.15	2.28	109.17
106	2,692	1.39	66.58	2.29	109.65
107	2,718	1.40	67.02	2.30	110.12
108	2,743	1.41	67.45	2.31	110.60
109	2,769	1.42	67.90	2.33	111.56
110	2,794	1.43	68.34	2.34	112.04
111	2,819	1.44	68.79	2.35	112.52
112	2,845	1.45	69.24	2.36	113.00
113	2,870	1.46	69.69	2.38	113.96
114	2,896	1.47	70.15	2.39	114.43



[STORMTANK.COM](https://STORMTANK.COM)

[info@stormtank.com](mailto:info@stormtank.com)  
+1.610.374.5109